

Online walk through the labs

Faculty of Civil Engineering

Laboratory equipment of the Faculty of Civil Engineering was delivered within the EU project *"Development of research infrastructure on the Campus of the University of Rijeka" - RISK*

The project was launched in 2014 in an effort to ensure high-quality research in collaboration with industry that improves the regional competitiveness of SMEs. Specific goals were also the development of research capacities of the University of Rijeka, increasing the number of projects and knowledge transfer.

UNIVERSITY OF RIJEKA INFRASTRUCTURE:

CENTER FOR
HIGH
PERMEABLE
TECHNOLOGIES
IN BIOMEDICINE

CENTER FOR
MICRO AND
NANO SCIENCES
AND
TECHNOLOGIES

CENTER FOR
ADVANCED
COMPUTING
AND MODELING

LABORATORIES
OF THE FACULTY
OF CIVIL
ENGINEERING



- Geotechnical Laboratory
- Laboratory for Hydraulic Engineering
- Structural Engineering Laboratory
- Laboratory for Materials
- Laboratory for Roads

The total cost of laboratory equipment
53.374.535, 82 HRK



Laboratory manager:

Assistant professor Paulina Krolo, PhD

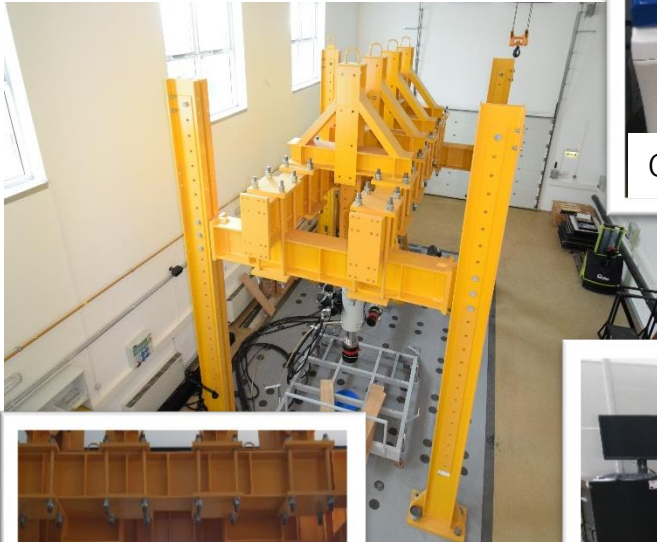
STRUCTURAL ENGINEERING LABORATORY



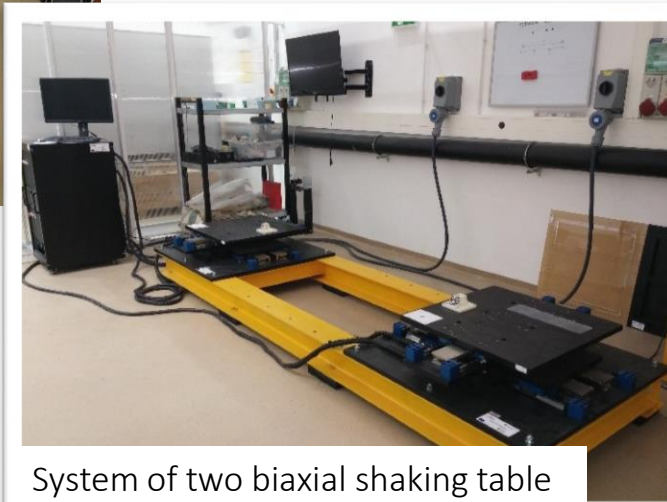
G

F

Steel frame with servo-hydraulic actuator capacity of 500kN i 250 kN



Cyclic corrosion test chamber



System of two biaxial shaking table



Universal tension-compression testing machine with temperature chamber



Laboratory manager:

Assistant professor Natalija Bede, PhD

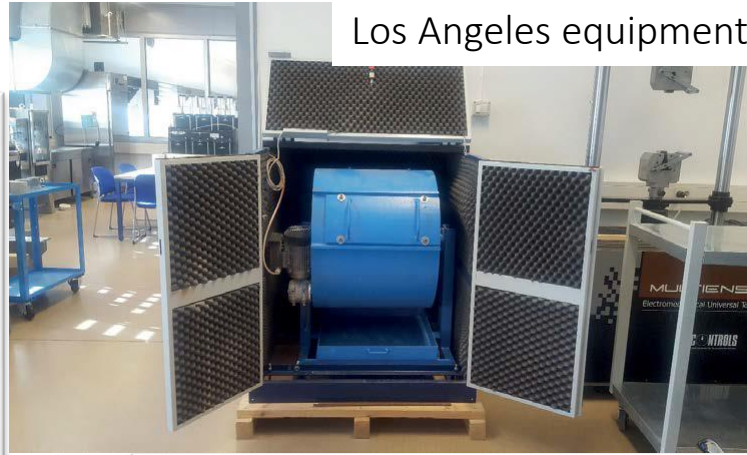
LABORATORY FOR MATERIALS



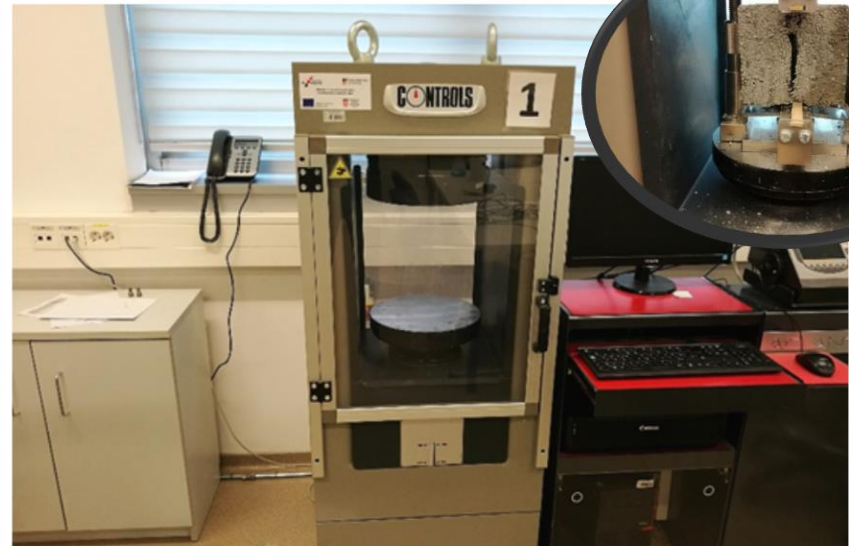
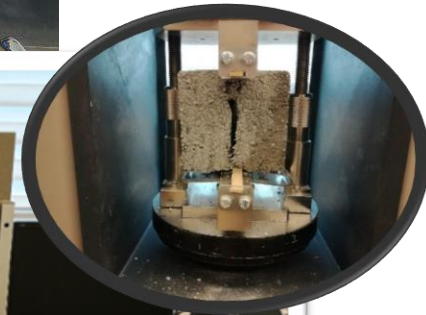
G

F

Los Angeles equipment



Permeability test equipment



Equipment for testing the compression properties of concrete



Servo-hydraulic flexure test machine



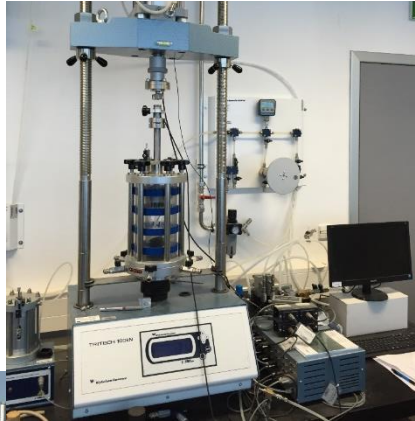
Laboratory manager:

Assistant professor Vedran Jagodnik, PhD

GEOTECHNICAL LABORATORY



Dynamic/cyclic
triaxial testing

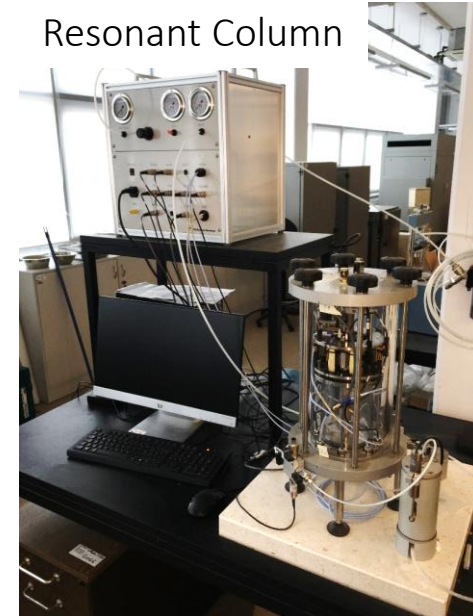


triaxial soil testing

Rock testing
- FORM+TESTs ALPHA 1-
2000s



Resonant Column



GDS direct shears in saturated
and unsaturated conditions



Large shear



Laboratory manager:

Senior lecturer Marijana Cuculić

LABORATORY FOR ROADS



F Fully automated electromechanical device for sample preparation by rolling



Device for testing plastic deformation of asphalt pavements



Device for dynamic cyclic testing of asphalt samples, fatigue and asphalt stiffness



Mobile device for measuring the deflection of pavement structures -GRONTMIJ

Primax 1500

Laser profiler- beam with 5 point laser meters ARRB HAWKEYE 2000+ Camera ARRB HAWKEYE 2000



Europska unija
Ulaganje u budućnost



Ministarstvo
znanosti,
obrazovanja
i sporta



Ministarstvo
znanosti,
obrazovanja
i sporta

Projekt je sufinancirala Europska unija iz Europskog fonda za regionalni razvoj.
Sadržaj ove publikacije isključivo je odgovornost autora.



Laboratory manager:

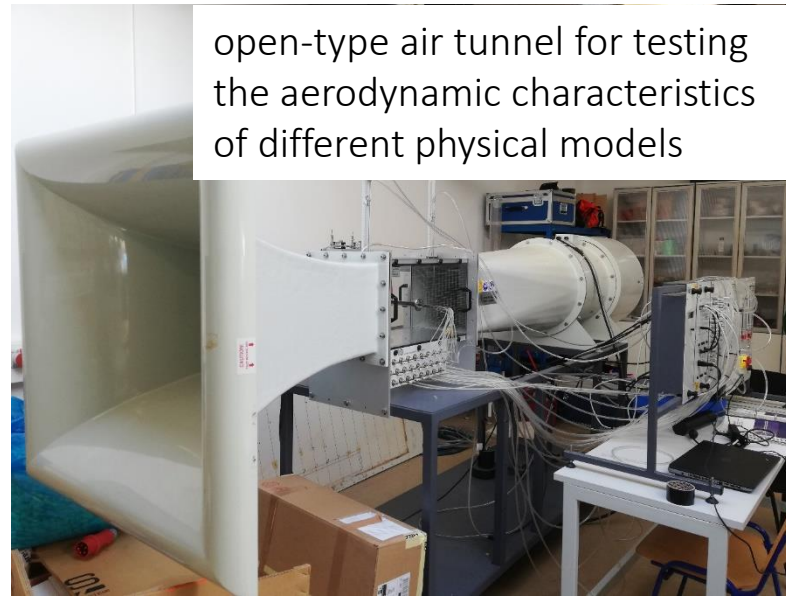
Assistant professor Igor Ružić, PhD

LABORATORY FOR HYDRAULIC ENGINEERING





Experimental pool with a wave generator



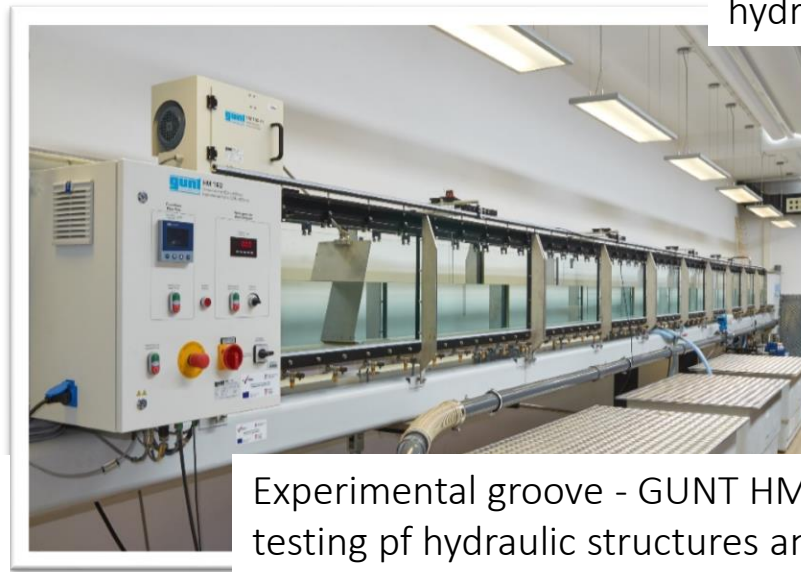
open-type air tunnel for testing the aerodynamic characteristics of different physical models



Chamber for advanced hydrological tests



3D printer Stratasys Connex 500 for preparation of physical model



Experimental groove - GUNT HM-162-Hydraulic testing of hydraulic structures and hydraulic processes

Scientific research

LABORATORIES

<https://www.gradri.uniri.hr/hr/znanstveno-istrazivacki-rad/laboratoriji.html>